

DC conceptCONTROL™ V3

 **DENTAL**
Concept Systems



DC conceptCONTROL™ V3

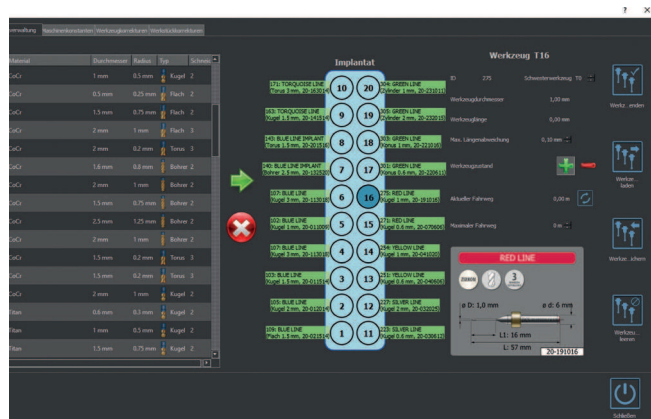
Control module with a future

The DC conceptCONTROL control software is regularly updated by additional modules and meets modern requirements. The third version of the software offers new tool management, measurement and DC3™ capabilities, among others.

DCS systems of the device family can now be optimally controlled and organized together via the control software. Modules for integrated cameras, extensions Tool magazines as well as modules for the hybrid processing are up-to-date and for future extensions integrated.

Components for tactile and optical measurement, for secondary constructions can also be connected and conveniently operated.

The control software DC conceptCONTROL is a proprietary product from Dental Concept Systems and is programmed by employees in the sense of the user. Continuous updating as suggested by DCS customers around the world is considered a significant challenge and ensures lasting competitive use of the milling systems.

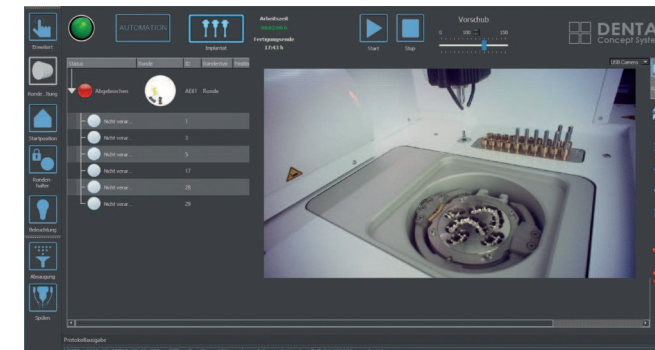
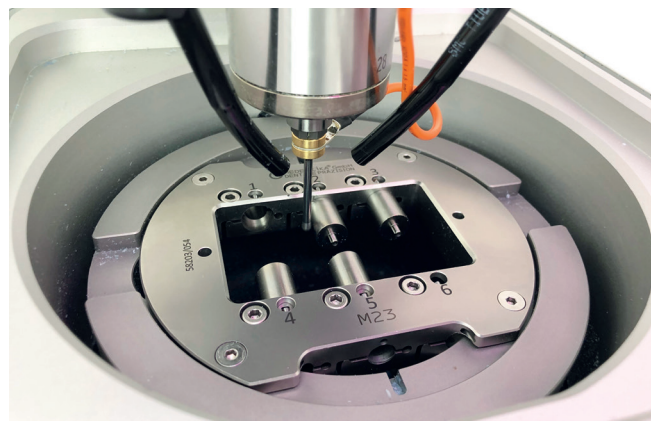


Extensive tool management

The new tool management in the control software now includes extensive areas for tool allocation, tool run times, sibling tool management and allows a user-adjustable maximum runtime for all tool applications from the BLUE LINE to the new ORANGE LINE from the Dental Concept Systems range. During development, a simple and self-explanatory surface was in the foreground.

PreMill position module

The new module for measuring PreMill bodies in the DCS systems clearly shows how fast and precise the systems can work. There are many milling machines available for milling, but anyone who can carry out surveys quickly and with high precision has decisive advantages. The new PreMill Position module determines the actual position of the PreMill body in the holder, after individual insertion by the user and allows accurate results.



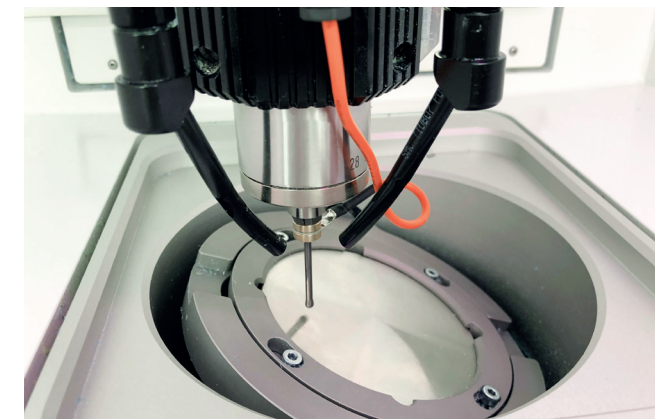
Camera dual module

With the new camera module, cameras are operated in the workspace and outside of the systems. The clear use of cameras enables the precise observation of all processes in the systems and provides up-to-date information to the DCS support teams in Wesertal and Senden.

With a special microscope camera, conclusions about the state of tools can be recorded and captured milled restorations transmitted. With the support team from Germany together all areas, with remote maintenance systems, to be able to see offers extensive chances with the prevention of error sources and for the training of qualified coworkers at the DCS systems.

3D machine measurement

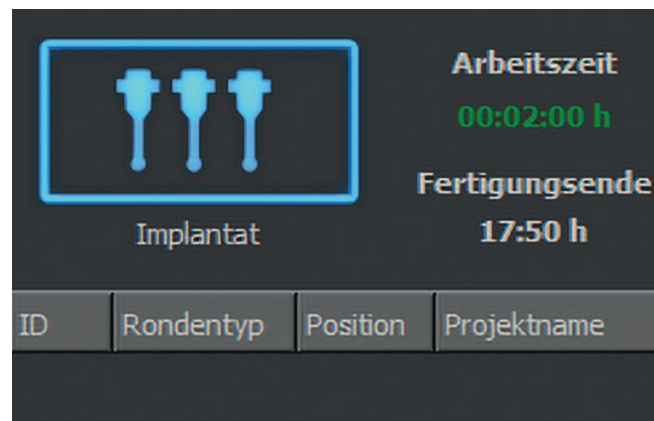
The new 3D machine measurement does not have to work with an additional measuring ball or similar complex bodies. The new Messblank impresses with its simple form and delivers data through the targeted employment in the machine. The fast deployment with comprehensive data acquisition enables precise fine adjustments in the sense of high-precision production in free 3D space.



DC5™ 11-fold magazine module

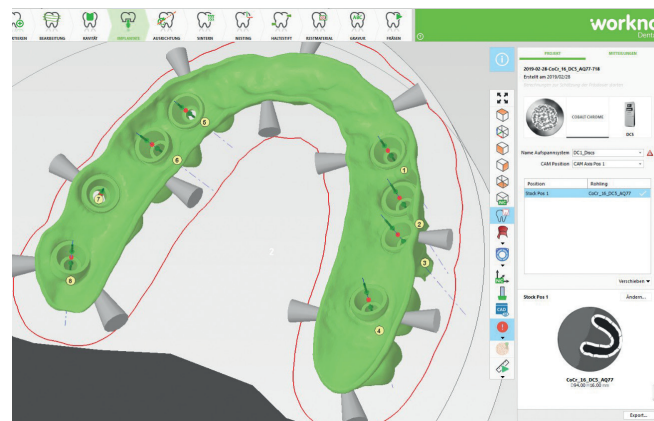
Users of DC5™ milling systems can now also use magazines for 11 milling tools in their devices. When used for the Implant Line, 11 tools are provided with the CAM of WorkNC Dental or Hyperdent and represent a desired extension. Of course, all tools in the tool management have been revised and presented clearly.





Production time indicator

The duration of milling steps and the resulting completion of the objects are important information for the user. The actual working time is not only composed of the milling times. The end of production is difficult to determine due to a variety of processes, but now clearly displayed and allows a permanent overview.



CAM module for extensive connectivity

In the DC conceptCONTROL V3 now connections for the CAM software Hyperdent are more comfortable and more extensively integrated. Special requirements for software with industrial level also require additional and understandable possibilities, in the sense of the user, in the control software. In cooperation with the development of the respective CAM software, the DCS editions are created and regularly extended by current innovations.



Language modules

A wide variety of speech modules provide even more convenience for DCS customers around the world. Although the English language is used in the modern software world, Dental Concept Systems is active in enabling all users to operate in their own native language. An important point also from the point of view of a quickly understandable training in the new software modules and in the operation of all process sequences.

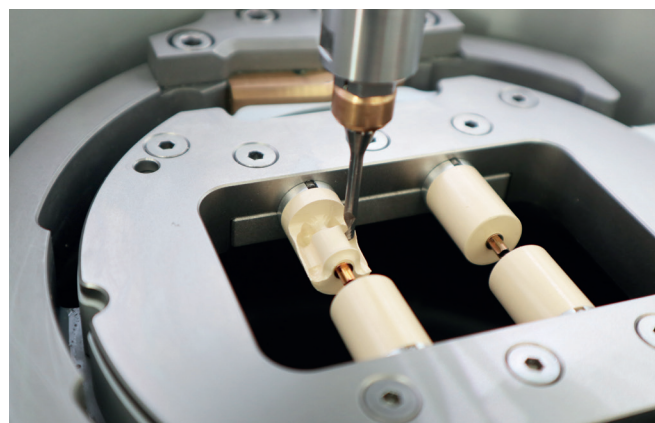


DC3™ concept - Modular system

The DC3™ concept allows users to extend their systems permanently. Depending on the extensions, the operation of the systems must also be adapted and comprehensible.

These options are now supported in the new version of the control software. Depending on the wishes of the customer, the module components can be purchased in the DC conceptCONTROL V3 and quickly released.





Measuring in the Blue 44 holder for Bio HPP® Prefabs

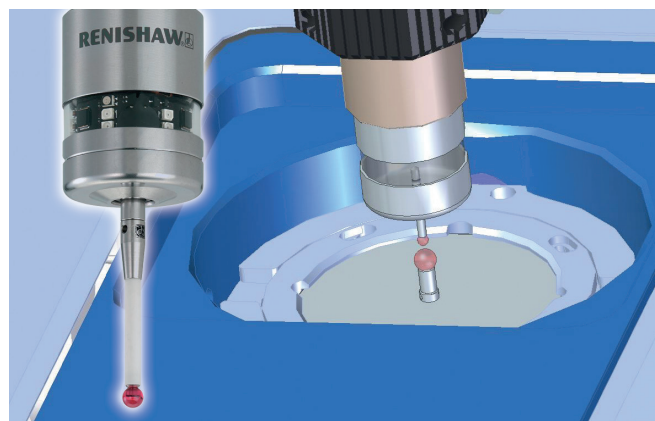
The precise processing of Bio HPP® Prefabs also requires precise information about the actual position of the holders in the machine. In the V3 of the control software there is now a special measurement to be able to process prefabs from Bredent even better. The fact that Dental Concept Systems is now part of the Bredent Group is particularly reflected in the integration of innovative materials and milling tools.



Master control for multiple operation

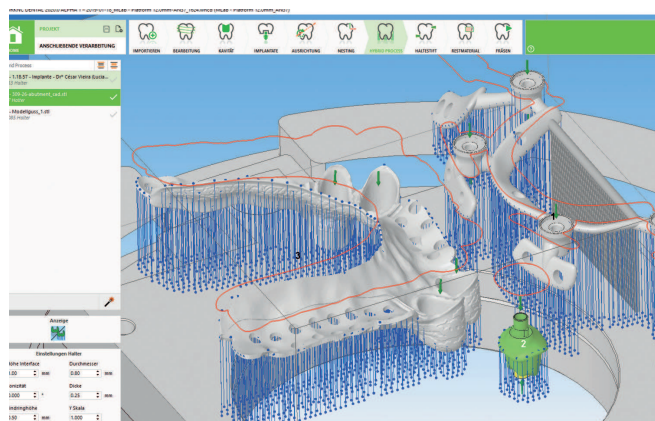
Previously, one control software per system or milling machine was required. With the new version, up to 4 DCS milling machines can be operated and monitored with one control.

A clear advantage not only in the operation, but also in terms of investment. DCS users with multiple milling systems only need a new license when changing versions.



Integrated tactile measurement module*

The option of connecting a wide variety of components is available as of version 3 of the DC conceptCONTROL control software. Tactile probes or optical systems of additional manufacturers can be used and integrated in the machine. Depending on the manufacturer and version, there are special holders and modules for integrating the measuring systems. Since additional knowledge of the users is necessary for the application of the systems, training concepts are offered.



Hybrid processing module

In order to be able to mill objects produced in 3D printers or laser melting processes in DCS systems, special holders and modules are prepared in the control software. Depending on the state of the art and joint development, users will have the option of integration in the current version of the DC conceptCONTROL and in the milling systems. The new developments for hybrid processing in the CAM software are enabled and supported by the control software.



BioHPP® elegance Hybridabutments



Surpassed only by nature itself!

bredent
group



Order conveniently online or by phone:
customerservice.DCS@bredent.com
+49 (0) 73 09 / 8 72-441



CAD/CAM Support Online-Ticket:
dental-concept-systems.com/support



Distribution partner:

